

Launch of the Global Model for Earthquake Social Vulnerability and Resilience

Thursday, Dec 03, 2020

Participatory Evaluation of Earthquake Risk and Resilience in Lalitpur Sub Metropolitan City, Nepal

Surya Narayan Shrestha
Executive Director

National Society for Earthquake Technology – Nepal (NSET)



Participatory Evaluation of ERR in Lalitpur Sub Metropolitan City

Objective:

- Test and Finalize Multi-level City Resilience Scorecard Evaluation System

Outcome:

- Preliminary Evaluation of Earthquake Risk Resilience of each ward and the municipality

Impact:

- Understand and internalize the existing vulnerabilities
- Motivated municipal stakeholders to fulfill identified gaps
- Shift from isolated sporadic interventions to Municipal Strategic DRR Plan

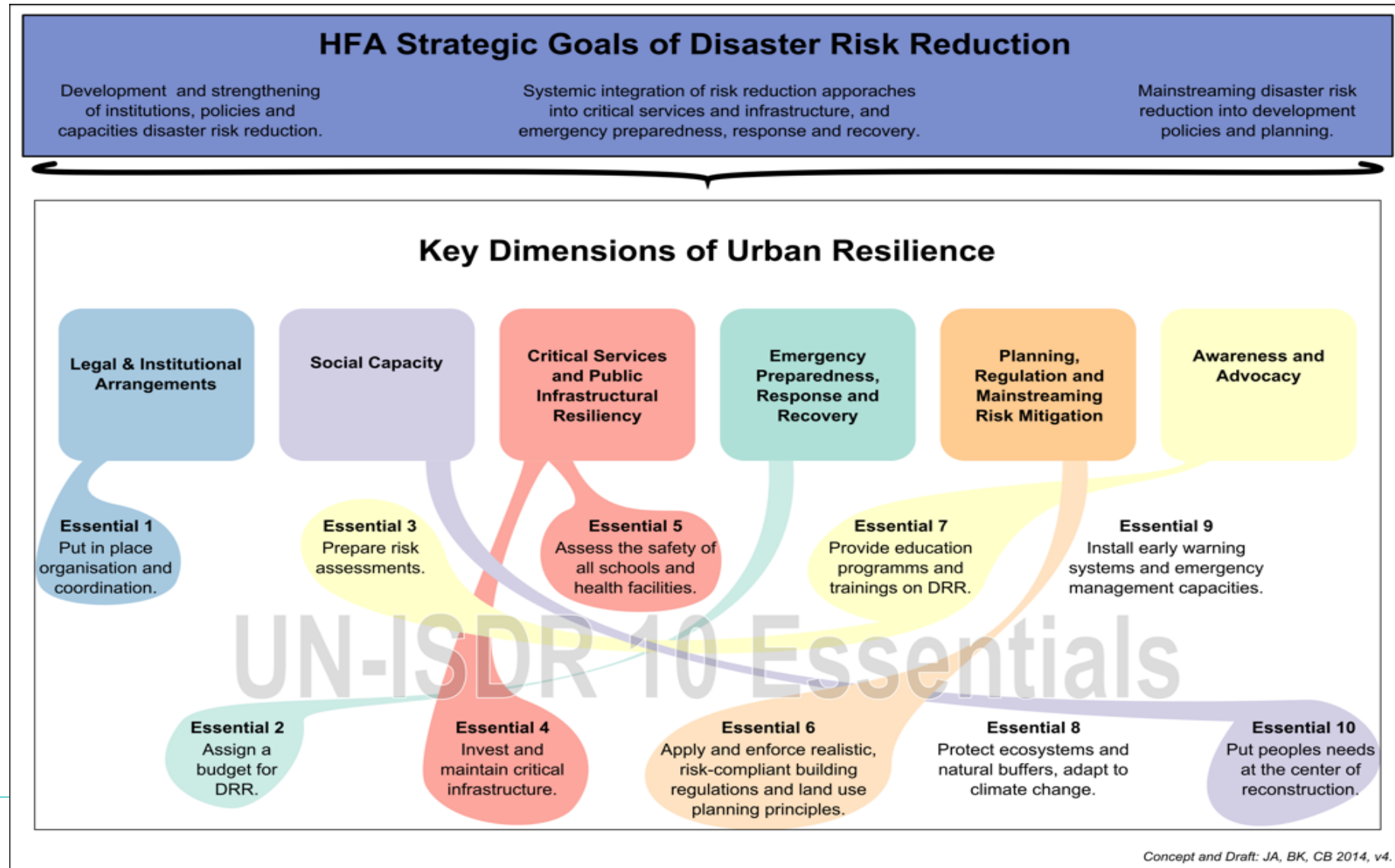
Lalitpur Metropolitan City

One of the major cities in Kathmandu Valley

- Number of wards: 29
- Population:
 - Male: 145,924
 - Female: 138,998
 - Total 284,922, CBS 2011
- Households: 70,256
- Area: 36.12 Sq. Km
- Population Density: 7,888/sq km
- Major Hazards:
 - Fire
 - Earthquake
 - Flood
 - Road Accidents



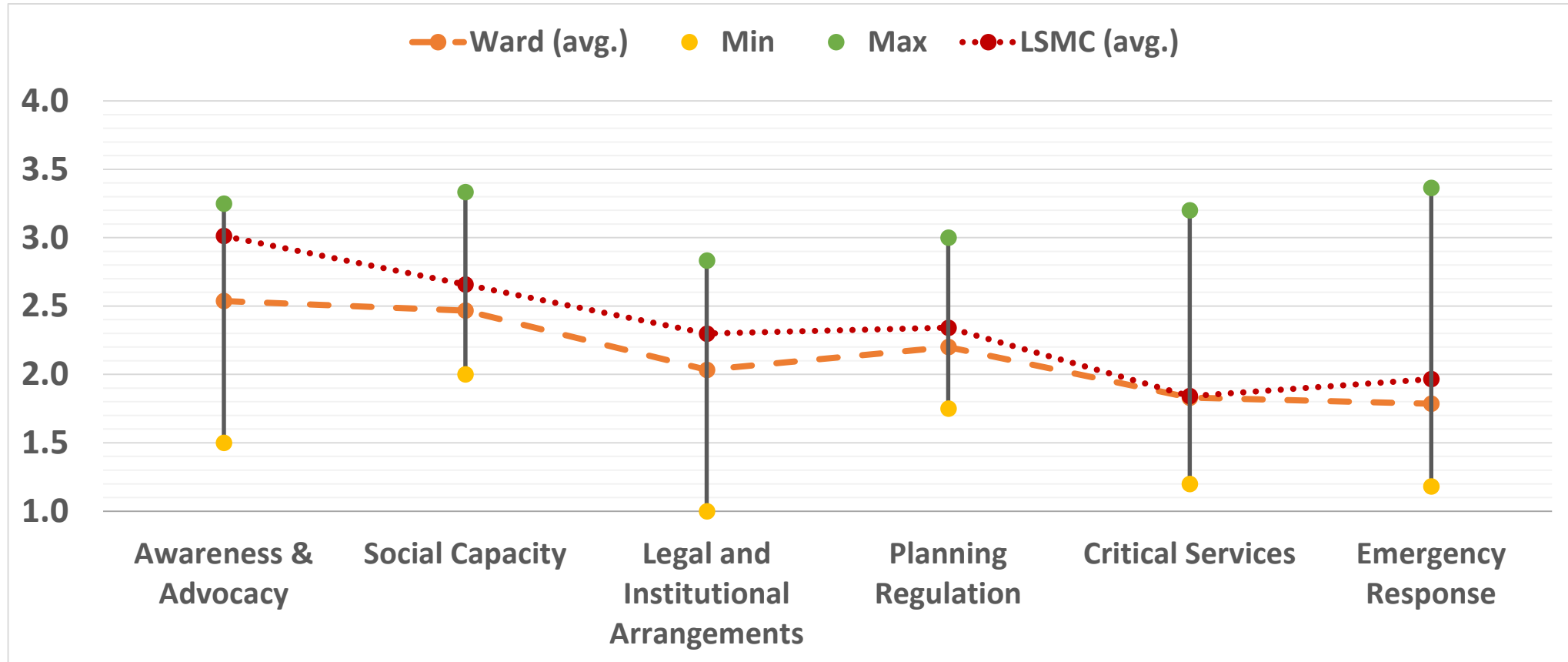
Key Dimensions of Urban Resilience



PEERR Workshop at Lalitpur



Comparision of Wards and LSMC Scores



Priorities for the wards based on the gaps identified by the results of PEERR

1. Awareness and Advocacy

2. Legal and Institutional Arrangements,

3. Emergency Response

DRR Activities after the PEERR Workshop

Awareness and Advocacy

- Community, ward and municipal level awareness programs on DRR
- Orientation programs at schools

Scenario and Planning

- Ward Level Earthquake Scenarios for Ward 16 and 21

Legal and Institutional Arrangements

- Formation of DRMC in all 29 wards (as per new federal structure)
- Setup Emergency Fund

Ward level Earthquake Scenario Development Workshop

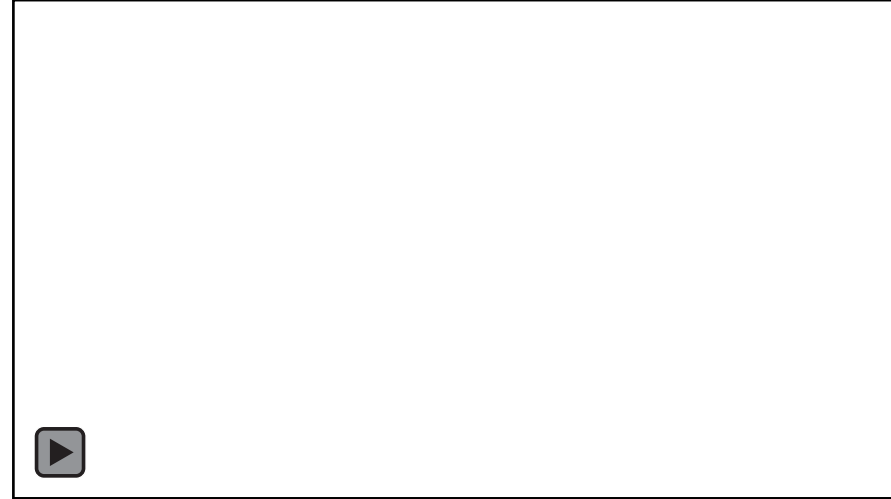


Youth Assembly for DRR

DRR Activities after the PEERR Workshop

Emergency Response and Preparedness

- Local Search and Rescue Training at LMC 16
- SAR training and SAR tools and equipment placed at all 29 wards 2018
- Empowering Women Through Disaster Risk Reduction 2017-18 (IHRR)
- Women led Community Fire Response system at LMC 21
- Campaign for Non-Structural Mitigation June 2015-June 2016, (Shapla Neer)
- CBDRM Jan 2016-Feb 2018 Ward 16 and 21 (GGs, Kyoto University)



Towards sustainable DRR Systems

- Coverage - 29 wards with additional areas based on new federal structure
- Elected Leadership since 2017
 - Locally lead DRR
- DRMCs formed and active in all wards
- Disaster Fund Created
- Annual plan includes activities for DRR in all 29 wards
- **NSET appointed as DRM Advisor for LMC**

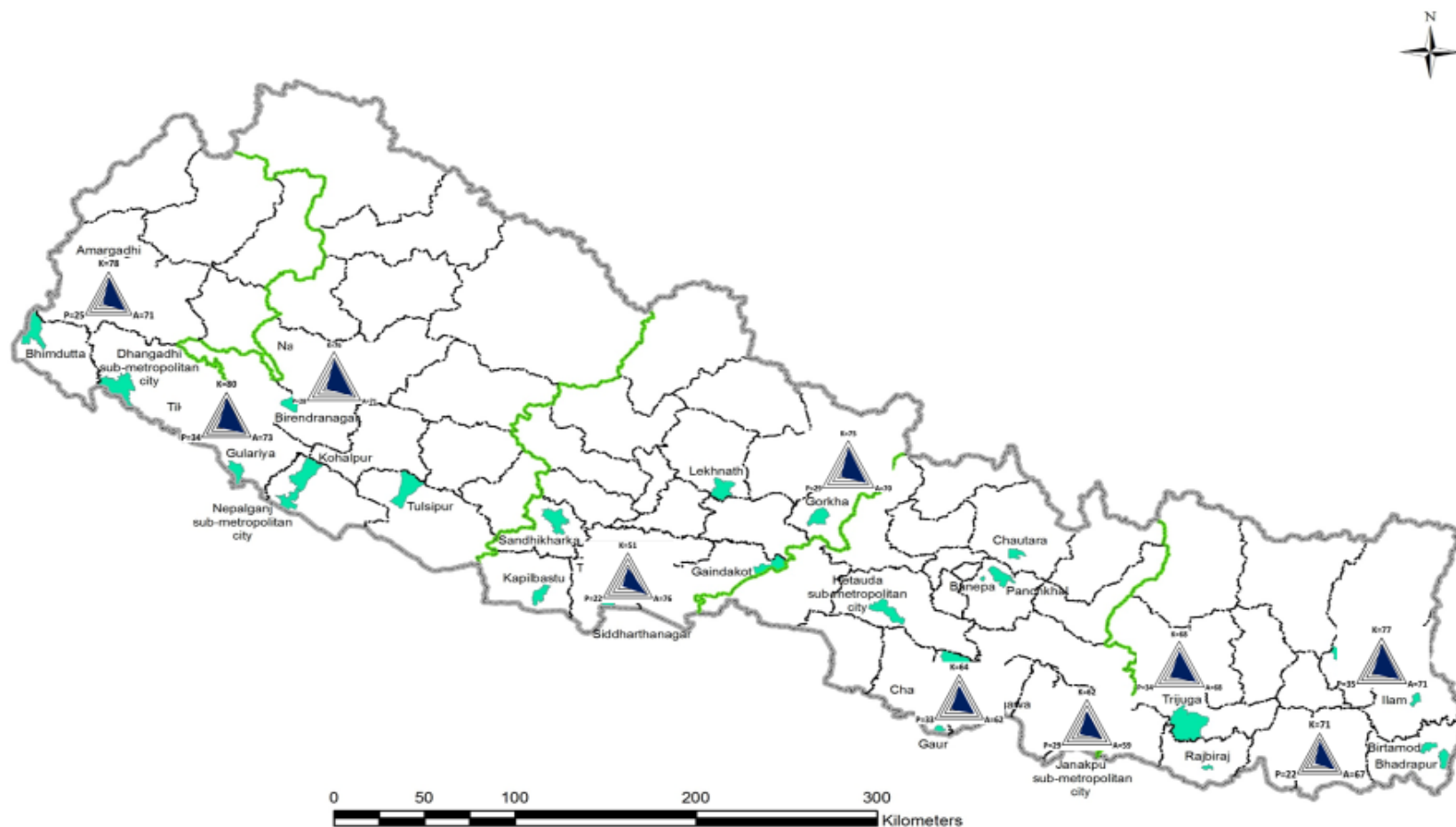
Replication of Assessment Methodology

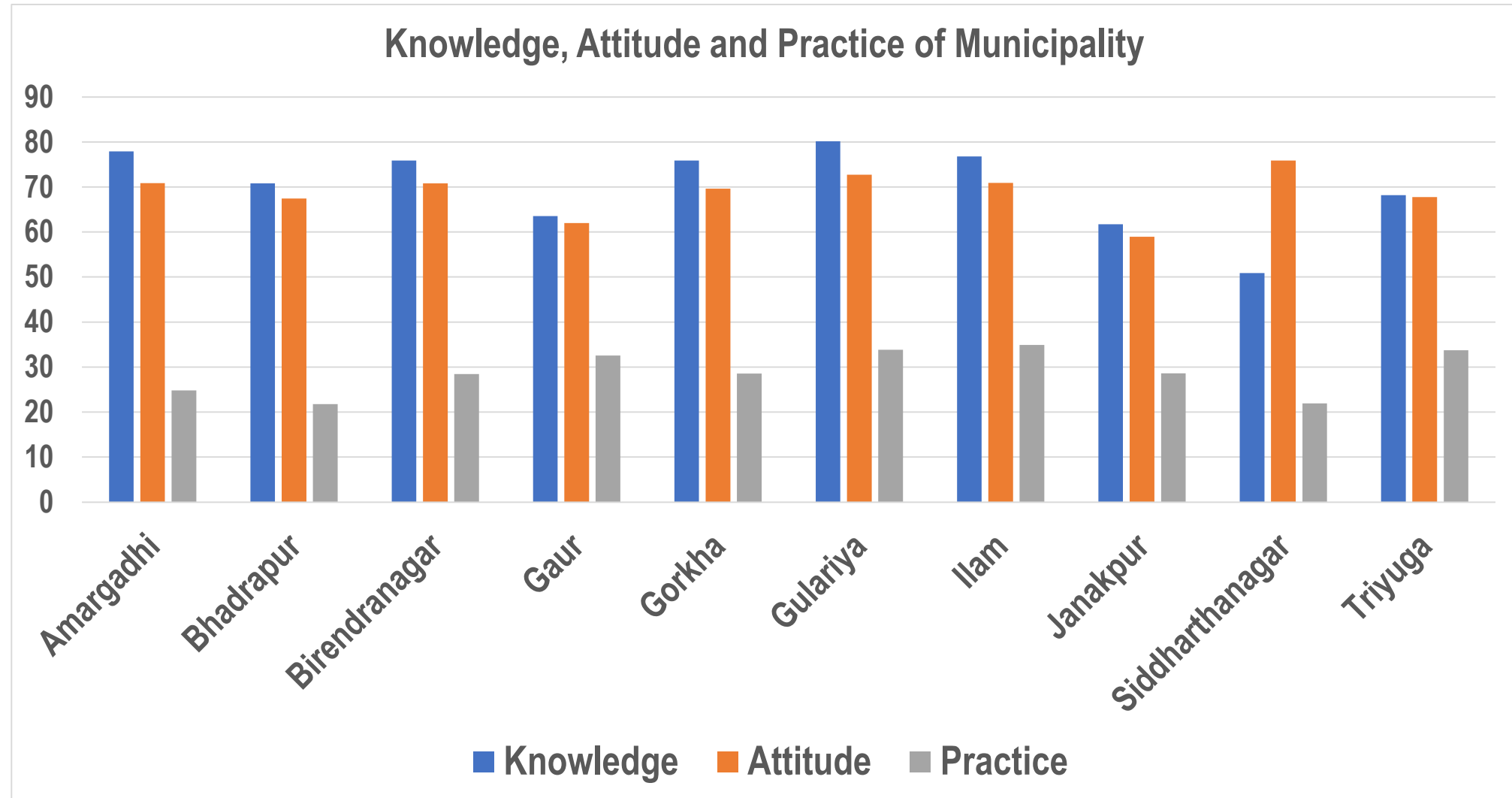
NSET replicated the assessment methodology and tools

- Local Government Self Assessment Tool (LGSAT) for Disaster Governance in 30 Municipalities of Nepal
- Assessment of Knowledge, Attitude and Practice (KAP) on DRR for 10 Municipalities
- Assessment of Building Code Compliance in Municipalities
- Risk Perception Survey in local communities

DRR Baseline of 30 municipalities

- DRR Baseline using LGSAT in 30 municipalities (highlighted with green color)
- KAP of 10 municipalities (shaded triangles)





Way Forward

- Scorecard method was found to be participatory, interesting and eye-opening
 - Successful in enhance engagement of local leaders
- 2nd PEERR Workshop for review of DRM status in Lalitpur
 - Tentatively March 2021
- NSET plans to continue assessment methodology in other municipalities
- Need to integrate into municipal system for periodic assessment to monitor and review progress

Thank you