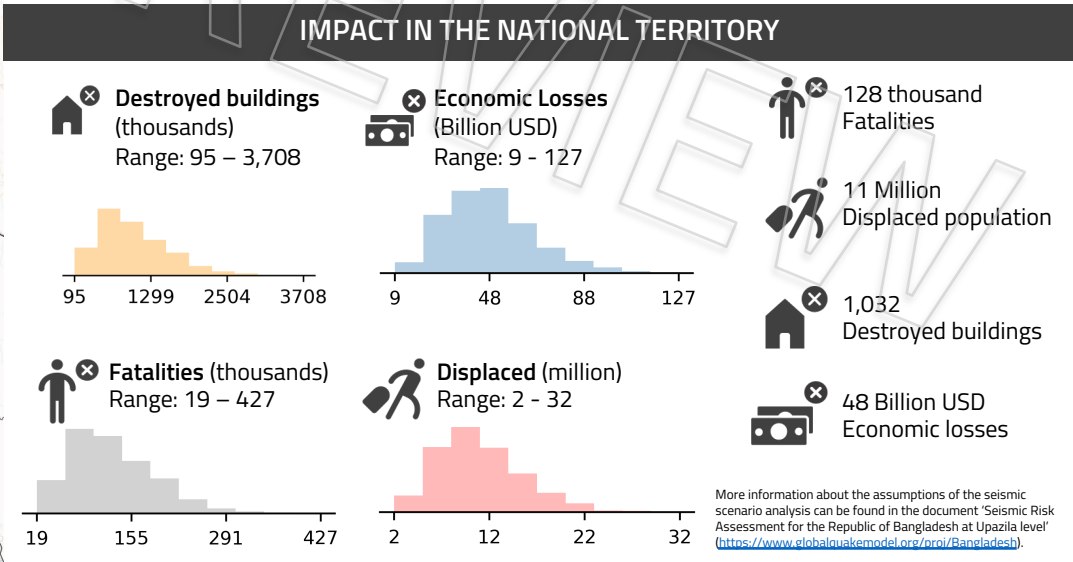


ZILAS WITH HIGHEST RISK

Zila	Fatalities	Displaced population	Destroyed buildings	Economic losses (Million USD)
Sylhet	14,985	1,308,839	128,161	3,813
Dhaka	11,740	1,303,215	34,020	6,906
Bogura	10,666	645,765	78,527	2,826
Mymensingh	9,679	787,281	84,044	3,652
Sunamganj	8,602	578,469	66,863	1,510
Dinajpur	7,165	464,985	55,025	1,928
Naogaon	6,379	340,266	42,053	1,457
Gazipur	5,948	535,167	32,675	2,303
Rangpur	5,848	475,737	62,908	2,247
Moulvibazar	5,606	410,913	41,395	1,365
Gaibandha	4,520	391,004	55,293	1,739
Joypurhat	4,384	215,147	29,614	849
Habiganj	3,433	289,263	24,036	1,084
Netrakona	2,711	295,754	35,614	1,221
Rajshahi	2,385	192,650	17,612	1,012



More information about the assumptions of the seismic scenario analysis can be found in the document 'Seismic Risk Assessment for the Republic of Bangladesh at Upazila level' (<https://www.globalearthquakemodel.org/nroi/Bangladesh/>).