



Installing OpenQuake Tools on a PC or laptop using the OVA appliance

IN BRIEF

We recommend all those that would like to test/experience/use the OpenQuake Engine to use the OATS web-service. If you cannot use that for some reason, you can get files from us and run it on a virtual machine. We explain here how to install these files.

These instructions help you to install The OpenQuake Engine and Tools on a PC, for those users that cannot use OATS, or prefer not to use it for other reasons.

▶ USING VIRTUALBOX IMAGES

We are also providing VirtualBox images containing the OpenQuake Engine software running on Ubuntu Linux. They allow you to test OpenQuake on you already existing operating system (Windows, Mac and Linux/BSD).

FILES

To get started you need to **download** and install **VirtualBox** from Oracle.

Then you need the virtual machine image containing OpenQuake and Ubuntu 14.04: you can get *32bit* or *64bit* versions from our **download page**.

INSTALLATION STEP-BY-STEP

1. Install Virtualbox
2. Open Virtualbox and select File - Import Appliance
3. Select the downloaded *ova* file
4. Choose: Import with all default settings
5. In Virtualbox, open Settings - Shared Folders
6. Add a new shared folder
7. In Folder Path select any folder on your computer
8. In the Shared Folder of the Virtual Machine, change the Folder Name to 'vbox'
9. Uncheck the box 'Auto-Mount'
10. Click OK
11. If you have a PC with low ram-memory (2GB or less) go to the settings panel, select System and change the Base Memory to 512MB. [Especially when you get a warning that you have allocated more that 50% of your computer RAM to the virtual machine]
12. Click OK

VIRTUAL MACHINE

LATEST OPENQUAKE NEWS

OO ROLLS OUT NEW BUILDING ...

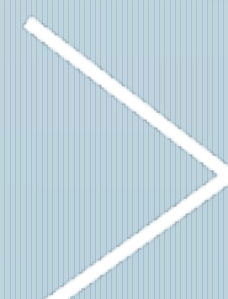


OpenQuake | 27 Apr 2017
> The OpenQuake development team rolls out the latest version of the Building Classification Tool

WHAT'S NEW WITH OPENQUAKE VERSION ...



OpenQuake | 08 Mar 2017
> The OpenQuake Engine Version 2.3 is now available. This version features 1) improved interoperability 2) ...



READ ABOUT

In the virtual machine window log in with:

login: openquake

password: openquake

The directory `/media/sf_[shared_folder_name]` should now be linked to your host computer in the directory that you selected in step 6. On your host computer if you navigate to the folder that you selected in step 6, you will see all of the folders used by OpenQuake.

The demos are located in `/home/openquake/GEM/oq-demos`.

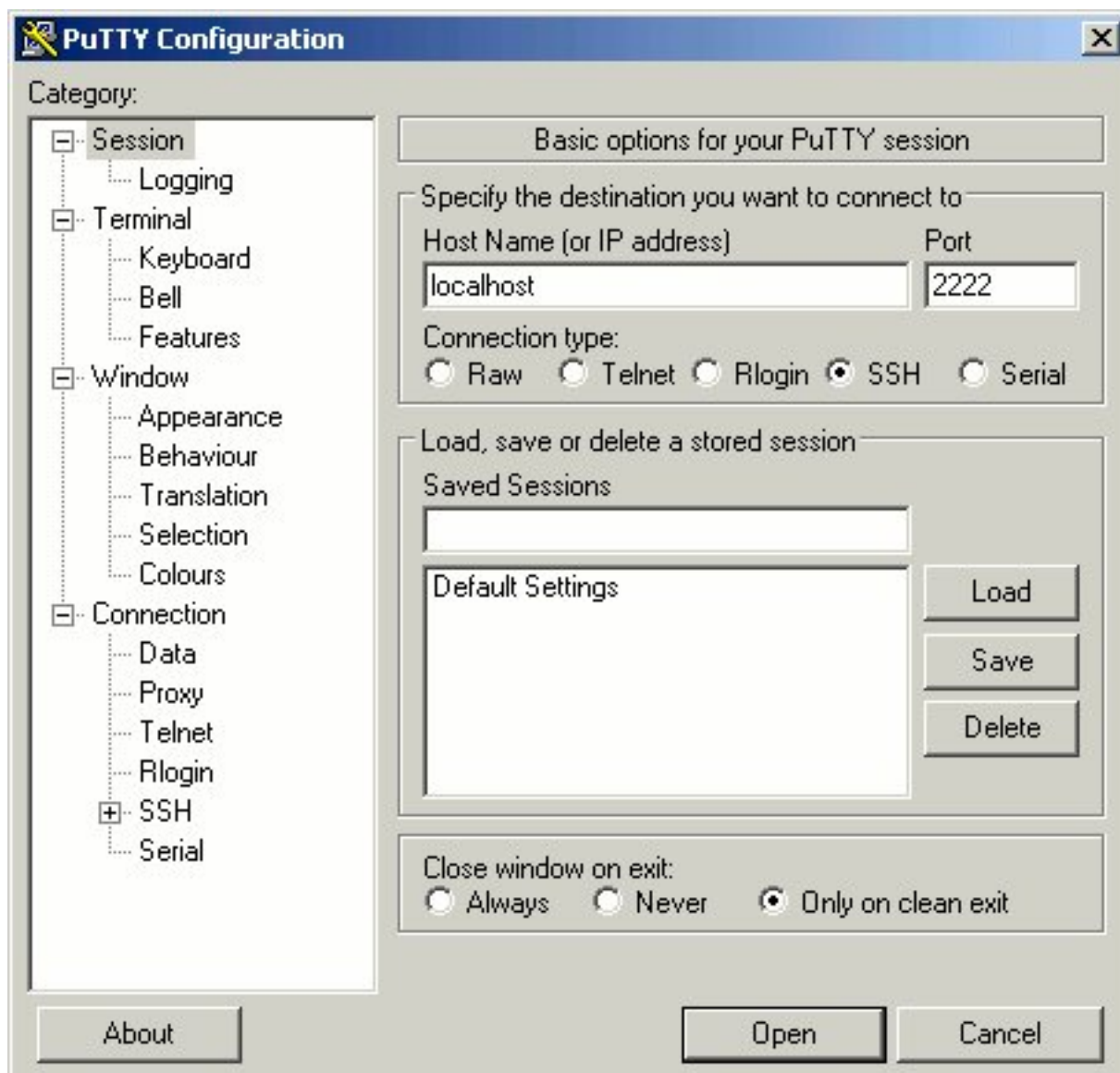
OPTIONAL

After installing the virtual machine you can use it from a terminal on your host computer. You may wish to do so, because you can copy and paste into the terminal, view the terminal full screen and scroll in the terminal.

To do so on Linux and Mac you need a terminal and use ssh command:

```
ssh -p 2222 openquake@localhost
```

On Windows you need to install **putty** and configure it as shown below:



► NEED HELP?

If you have any questions already please write info@openquake.org at any time or visit our OpenQuake Users discussion group at Google.



[About](#)
[Jobs](#)
[News](#)

[Sitemap](#)
[GEM Nexus](#)
[Stay in touch](#)

[Publications](#)
[Community](#)
[Contact](#)

[OpenQuake Platform](#)
[OpenQuake Engine](#)
[Follow OpenQuake](#)

[Test the Engine](#)
[Download](#)
[Documentation](#)

© GEM some rights reserved | [Terms of use](#) | [Privacy](#)

GEM Foundation | Via Ferrata 1, 27100 Pavia, Italy | +39 0382 5169865 | info@globalquakemodel.org

Tax code: 96059180180 | VAT number: IT02585230184 | PEC: gemfoundation@pec.it