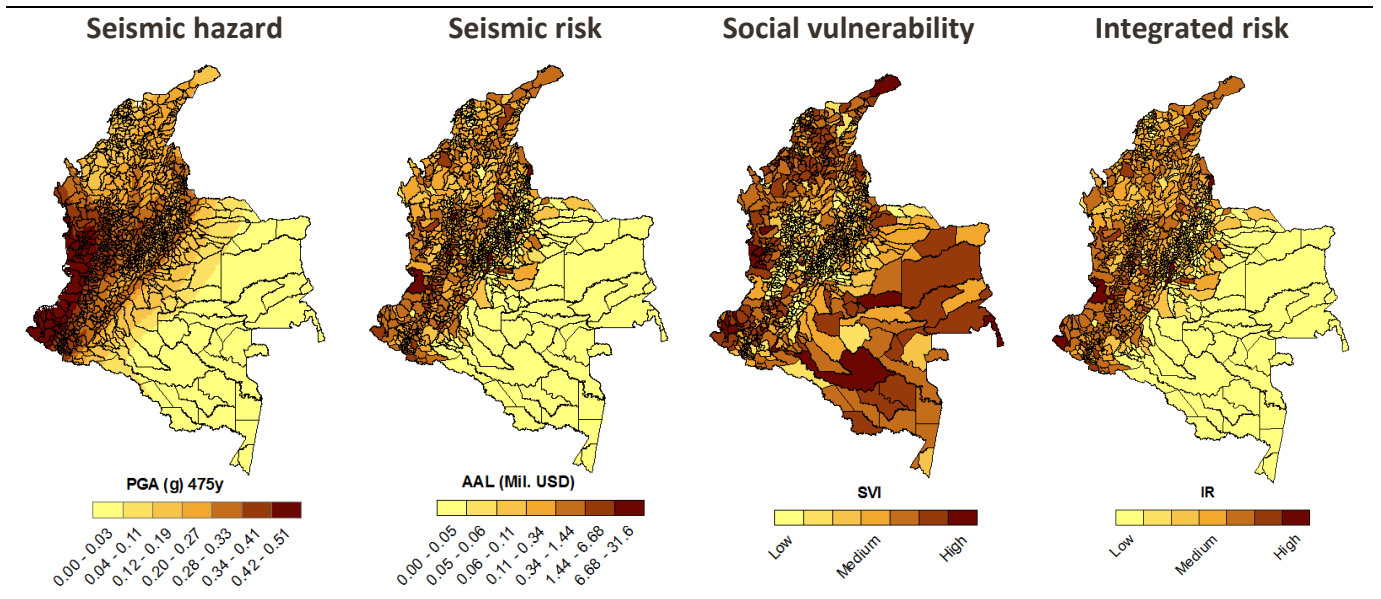


Earthquake Risk Profile for Colombia

In terms of population and property, Colombia has one of South America’s highest exposure levels to significant seismic hazard. In the last century, earthquakes have caused more than 3,000 fatalities and economic losses of approximately 2.3 billion USD. The Armenia earthquake (M_w 6.2) of January 1999 caused more than a 1000 fatalities and an economic loss of almost 2% of the annual gross domestic product of Colombia. The wide spread damage was mostly due to the existence of non-engineered building and informal construction.



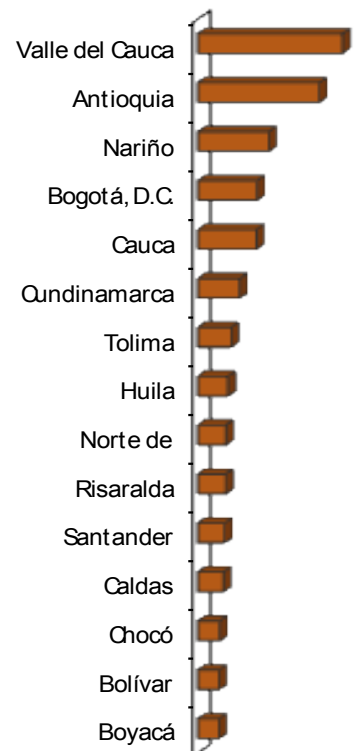
Social indicators

Population (mil.):	48.3
GDP (bil. USD):	378.1
Capital stock (bil. USD):	944.6
Life expectancy:	73.8
GINI Index:	55.9
Gross savings (bil. USD):	72.0

Risk indicators

Population at risk (mil.):	32.8
Property at risk (bil. USD):	255.1
AAL (economic – mil. USD):	430.4
AAL (fatalities):	31.8
Max. economic loss (bil. USD):	25.2
Probable max. loss (bil. USD):	6.7

High risk regions



Financial indicators

