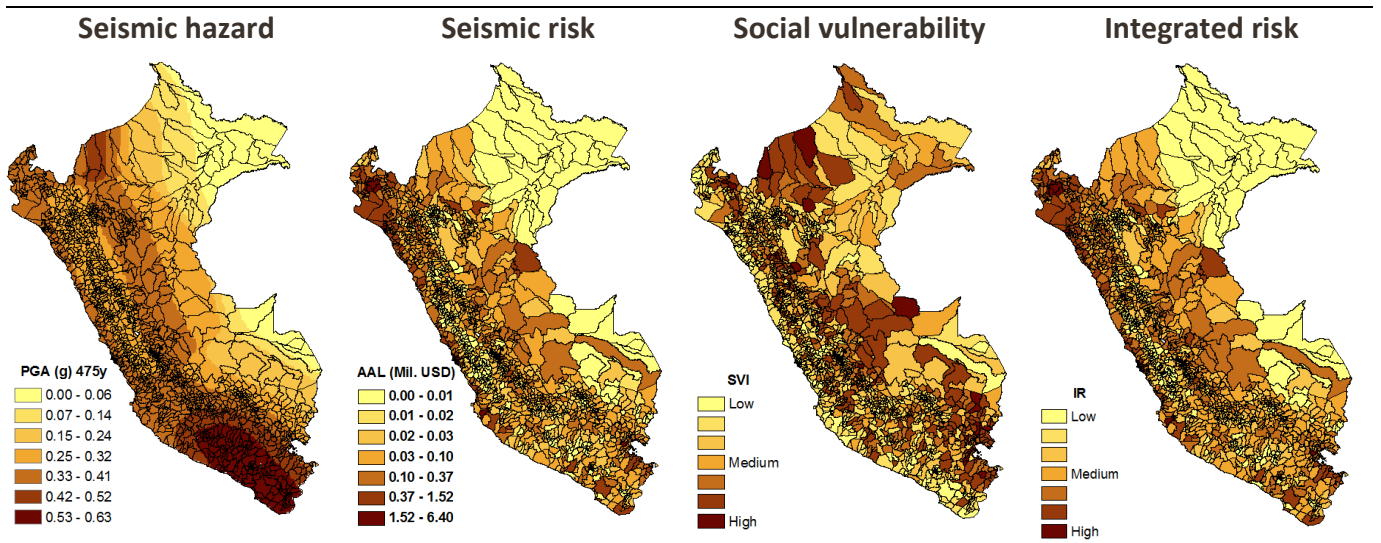


Earthquake Risk Profile for Peru

The seismic event with the highest death toll in the Peruvian territory occurred in May of 1970. This earthquake of M_w 7.9 was followed by a large landslide, causing more than 65,000 fatalities. More recently, an earthquake of M_w 8.0 struck the region of Pisco causing 593 fatalities and an economic losses exceeding 1 billion USD. Peru has a high percentage of unreinforced masonry and adobe construction, which has a poor seismic performance even for seismic events of low to moderate magnitude.



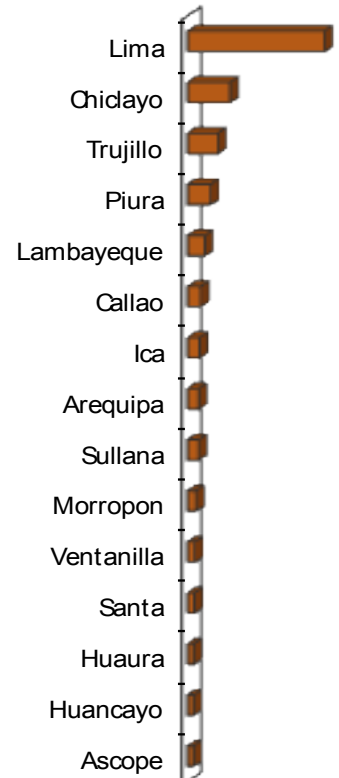
Social indicators

Population (mil.):	30.4
GDP (bil. USD):	202.3
Capital stock (bil. USD):	692.3
Life expectancy:	74.5
GINI Index:	48.1
Gross savings (bil. USD):	45.2

Risk indicators

Population at risk (mil.):	21.9
Property at risk (bil. USD):	92.2
AAL (economic – mil. USD):	273.5
AAL (fatalities):	29.3
Max. economic loss (bil. USD):	20.2
Probable max. loss (bil. USD):	4.2

High risk regions



Financial indicators

